

RELAPSED/REFRACTORY  
**Follicular lymphoma (FL)**

# REMISSION IS POSSIBLE. POWERED BY YOU.

With a one-time\* infusion of Breyanzi®,  
a CAR T cell therapy, you have the chance  
for complete and lasting remission.†



CAR, chimeric antigen receptor.

\*The treatment process includes blood collection, CAR T cell creation, administration, and side-effect monitoring. No maintenance therapy for the lymphoma is needed after Breyanzi as long as you are responding to treatment.

†Most people treated with Breyanzi who had no signs of follicular lymphoma continued to be in complete remission. Because this does not mean the lymphoma has been cured, regular check-ins with your healthcare team are still needed, and you may have to take medication to manage side effects.

## Indication

BREYANZI is a prescription medicine used to treat a type of non-Hodgkin lymphoma called follicular lymphoma, when two or more kinds of treatment have not worked or stopped working.

BREYANZI is different than other cancer medicines because it is made from your own white blood cells, which have been genetically modified to recognize and attack your lymphoma cells.

## Important Safety Information

### What is the most important information I should know about BREYANZI?

BREYANZI may cause side effects that are life-threatening and can lead to death. Call your healthcare provider or get emergency help right away if you get any of the following:

- difficulty breathing
- fever (100.4°F/38°C or higher)
- chills/shaking chills
- confusion
- severe nausea, vomiting, diarrhea
- fast or irregular heartbeat
- dizziness/lightheadedness
- severe fatigue or weakness

It is important that you tell your healthcare providers that you have received BREYANZI and to show them your BREYANZI Patient Wallet Card. Your healthcare provider may give you other medicines to treat your side effects.

**Please see Important Safety Information throughout and full Prescribing Information, including Boxed WARNINGS and Medication Guide.**



Home

To return to this table of contents,  
select the home icon at top left of any page.

# Table of contents

Select the page links to be directed to a  
specific topic or section of the brochure.

## Introduction

When it's time for a new approach to treatment [3](#)

Breyanzi® is made for you, powered by you [4](#)

## Who Breyanzi is for

The power of possibility [5](#)

Other considerations [6](#)

## How Breyanzi works

Powered to find and fight cancer [7](#)

## How Breyanzi can help you

Breyanzi makes complete and lasting remission possible [8](#)

Focus on freedom from ongoing treatment [9](#)

## Side effects

Side effects are possible [10](#)

Possible serious side effects to know about [11](#)

## Receiving Breyanzi

Treatment with Breyanzi is centered around YOU [13](#)

Monitoring [15](#)

## Support for you and your care partner

Caring for someone being treated with Breyanzi [16](#)

Cell Therapy 360®: Personalized support throughout your Breyanzi treatment [18](#)

## Starting the conversation

Questions to ask your doctor about Breyanzi [19](#)

## Important contact information

Keeping track of your healthcare team's contact information [24](#)

## Glossary

Important words to know and understand [25](#)

Glossary terms appear throughout this brochure.  
Select the links to see what these terms mean.



# When it's time for a new approach to treatment

While there are several treatment options available for follicular lymphoma (FL), you may have found that they stop working over time or your cancer has come back.

That's why you may want to try a new approach to your treatment with Breyanzi®, a CAR T cell therapy.

**With Breyanzi, you have a chance for complete and lasting remission.**

Breyanzi is a one-time\* [infusion](#) shown to provide remission from follicular lymphoma, while freeing you from ongoing treatment.†



I would strongly urge anyone [who] is a candidate or thinks they may be a candidate for Breyanzi CAR T therapy to ask your doctor about it.

Patient treated with Breyanzi

\*The treatment process includes blood collection, CAR T cell creation, administration, and side-effect monitoring.

†While regular check-ins with your healthcare team are still required, no maintenance therapy for the lymphoma may be needed after Breyanzi, as long as you are responding to treatment.

## Important Safety Information (cont'd)

**Before getting BREYANZI, tell your healthcare provider about all your medical problems, including if you have or have had:**

- Neurologic problems (such as seizures, stroke, or memory loss)
- Lung or breathing problems
- Heart problems
- Liver problems
- Kidney problems
- A recent or active infection

**Tell your healthcare provider about all the medications you take**, including prescription and over-the-counter medicines, vitamins, and herbal supplements.

**Please see Important Safety Information throughout and full [Prescribing Information](#), including [Boxed WARNINGS](#) and [Medication Guide](#).**



# Breyanzi<sup>®</sup> is made for you, powered by you

---



**Breyanzi is a one-time\*,  
personalized treatment made  
from cells in your own immune  
system that are powered to find  
and fight cancer.**

- Breyanzi may be an option, even if other treatments have not worked or stopped working—**so talk to your doctor to see if it is right for you**

\*The treatment process includes blood collection, CAR T cell creation, administration, and side-effect monitoring.

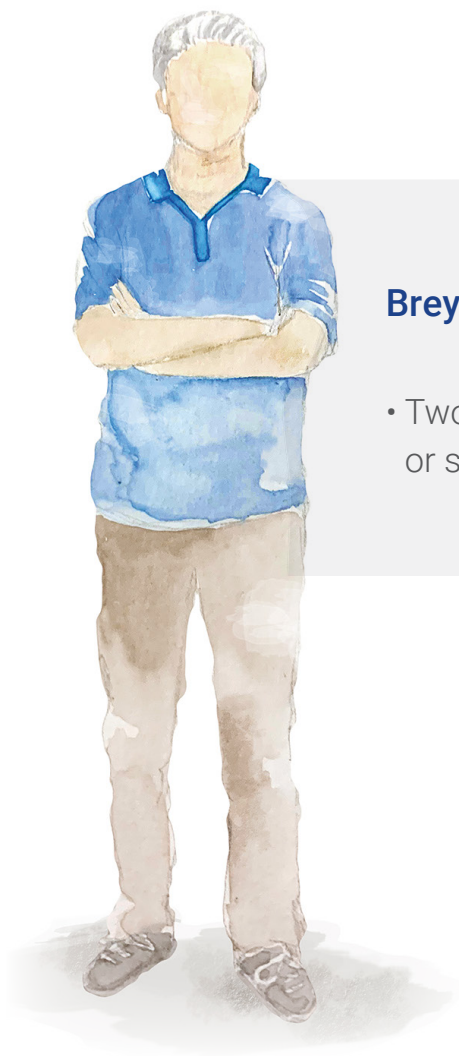
## Important Safety Information (cont'd)

### How will I receive BREYANZI?

- BREYANZI is made from your own white blood cells, so your blood will be collected by a process called leukapheresis.
- It takes about 3-4 weeks from the time your cells are received at the manufacturing site and are available to be shipped back to your healthcare provider, but the time may vary.
- Before you get BREYANZI, you will get 3 days of chemotherapy to prepare your body.

**Please see Important Safety Information throughout and full Prescribing Information, including **Boxed WARNINGS** and Medication Guide.**

# The power of possibility



## Breyanzi may be an option if:

- Two or more kinds of treatment have not worked or stopped working for your FL

**Talk with your doctor to learn if Breyanzi may be right for you.**

## Indication

BREYANZI is a prescription medicine used to treat a type of non-Hodgkin lymphoma called follicular lymphoma, when two or more kinds of treatment have not worked or stopped working.

BREYANZI is different than other cancer medicines because it is made from your own white blood cells, which have been genetically modified to recognize and attack your lymphoma cells.

**Please see Important Safety Information throughout and full Prescribing Information, including Boxed WARNINGS and Medication Guide.**



## Other considerations

In making Breyanzi a part of your treatment plan, your doctor will also consider your overall health and how cancer is affecting your daily life.

**Additionally, your doctor may also discuss:**

- Having a care partner, which is a friend or family member who is able to support you throughout the treatment process
- The importance of living or staying within 2 hours away from a treatment center for at least 4 weeks of monitoring after you receive Breyanzi

**If you're being treated with Breyanzi, you may enroll in the Cell Therapy 360® Patient Support Program. Learn more about Cell Therapy 360 on page 18.**



To find a Breyanzi CAR T treatment center near you, visit [breyanzi.com/find-a-treatment-center](https://breyanzi.com/find-a-treatment-center).

### Important Safety Information (cont'd)

#### How will I receive BREYANZI? (cont'd)

- When your BREYANZI is ready, your healthcare provider will give it to you through a catheter placed into your vein (intravenous infusion). BREYANZI is given as infusions of 2 different cell types.
  - You will receive infusions of one cell type, immediately followed by the other cell type.
  - The time for infusion will vary but will usually be less than 15 minutes for each of the 2 cell types.

**Please see Important Safety Information throughout and full Prescribing Information, including **Boxed WARNINGS** and Medication Guide.**

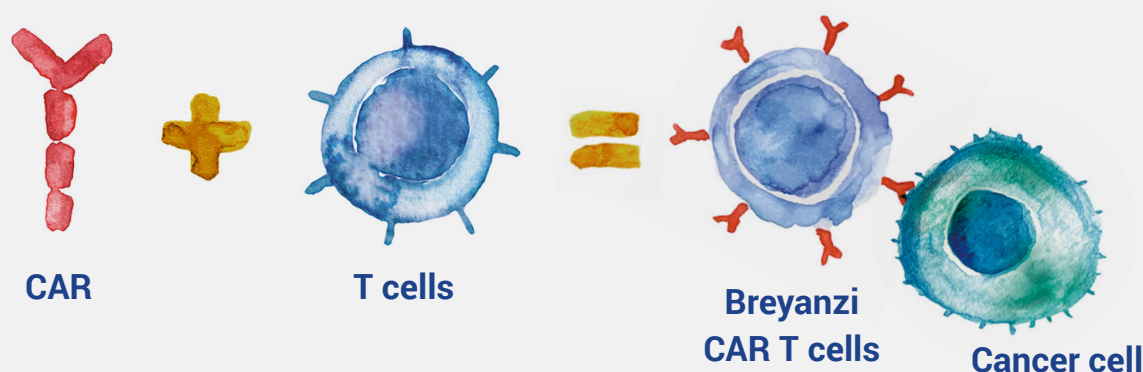


# Powered to find and fight cancer

Breyanzi is created specifically for you using cells from your own immune system.

- Your immune system is made up of many cells that help protect the body from disease
- One key immune cell is the T cell
- There are hooks, called receptors, on the outer surface of each T cell that can help find and fight cancer. However, some types of cancer can avoid T cells and keep growing—and that's where Breyanzi can make a difference

## How Breyanzi is made and how it works in your body



- With Breyanzi, hooks, called CARs, are added to your T cells
- Once the Breyanzi CAR T cells are made, they'll be put back into your body through an infusion
- After the infusion, the CAR T cells look for a marker found on certain cancer cells, as well as on some healthy cells
- Breyanzi attaches to the marker on cancer cells that allows Breyanzi and your body to find and fight cancer

## Important Safety Information (cont'd)

### How will I receive BREYANZI? (cont'd)

- During the first week after infusion, you will be monitored daily by the facility where you received your treatment.
- You should plan to stay within 2 hours of the location where you received your treatment for at least 4 weeks after getting BREYANZI. Your healthcare provider will check to see that your treatment is working and help you with any side effects that may occur.

Please see Important Safety Information throughout and full Prescribing Information, including **Boxed WARNINGS** and Medication Guide.



Home

HOW BREYANZI® CAN HELP YOU

**Breyanzi**  
(lisocabtagene maraleucel) SUSPENSION  
FOR IV INFUSION

# Breyanzi makes complete and lasting remission possible



A clinical study evaluated adult patients with follicular lymphoma that had come back or stopped responding after 2 or more other types of treatment.

## In the clinical study:

**96%**

of people **responded to treatment with Breyanzi.**

This is called overall response rate, which was seen in 90/94 people and measures a decrease or disappearance of cancer in the body.

**73%**

of people **showed no signs of follicular lymphoma.**

This is called complete response, which was seen in 69/94 people. A complete response does not mean the cancer has been cured.

The rest of the people who responded (21/94 people) experienced a decrease of cancer in the body. This is called partial response.

AFTER  
**18**  
MONTHS

a majority of people **continued to respond to treatment with Breyanzi.**

This is called duration of response. Out of the 90 people who responded, approximately 77% continued to respond to treatment after 18 months.

These are the results experienced by people in the Breyanzi clinical study. Your results may be different.

## Important Safety Information (cont'd)

### How will I receive BREYANZI? (cont'd)

- You may be hospitalized for side effects. Your healthcare provider will discharge you if your side effects are under control, and it is safe for you to leave the hospital.
- Your healthcare provider will want to do blood tests to follow your progress. It is important that you do have your blood tested. If you miss an appointment, call your healthcare provider as soon as possible to reschedule.

Please see Important Safety Information throughout and full Prescribing Information, including **Boxed WARNINGS** and Medication Guide.

## Focus on freedom from ongoing treatment



### AFTER A **1** TIME\* INFUSION

**Ongoing treatment for follicular lymphoma is not needed** while you are responding to Breyanzi.

- **NO ongoing infusions**
- **NO maintenance treatments**
- **NO daily pills**

Regular checkups with your healthcare team will be needed so they can keep track of how well you are doing and check to see if other medications are needed to manage side effects.

Some patients treated with Breyanzi may develop other cancers. Your healthcare team will provide lifelong monitoring for these cancers.

\*The treatment process includes blood collection, CAR T cell creation, administration, and side-effect monitoring.

### Important Safety Information (cont'd)

#### What should I avoid after receiving BREYANZI?

- Do not drive, operate heavy machinery, or do other activities that could be dangerous if you are not mentally alert, for at least 8 weeks after you get BREYANZI. This is because the treatment can cause temporary memory and coordination problems, including sleepiness, confusion, dizziness, and seizures.
- Do not donate blood, organs, tissues, or cells for transplantation.

Please see Important Safety Information throughout and full Prescribing Information, including **Boxed WARNINGS** and Medication Guide.



## Side effects are possible

Side effects are possible. Your healthcare team knows what to look for with Breyanzi<sup>®</sup> and is prepared to manage any side effects that may occur.

### The most common side effects of Breyanzi are:

- fatigue
- difficulty breathing
- fever (100.4°F/38°C or higher)
- chills/shaking chills
- confusion
- difficulty speaking or slurred speech
- severe nausea, vomiting, diarrhea
- headache
- dizziness/lightheadedness
- fast or irregular heartbeat
- swelling
- low blood pressure
- muscle pain



**These are not all the possible side effects of Breyanzi.**

**See possible serious side effects on pages 11–12.**

Breyanzi may cause side effects that are life-threatening and can lead to death. Call your healthcare provider or get emergency help right away if you have any of the side effects listed above or on pages 11–12. For medical emergencies, call 911.



## Possible serious side effects to know about

Breyanzi<sup>®</sup> may cause serious side effects that are life-threatening and can lead to death. Your healthcare team is trained to manage the side effects of Breyanzi, such as **cytokine release syndrome (CRS)** and **neurologic toxicity (NT)**.

CRS happens when the immune cells release a large amount of proteins, called **cytokines**, into the blood. Some symptoms of CRS include fever, chills, fast heart rate, headache, and not enough oxygen getting into the tissues of the body.



### When did CRS happen and how long did it last in clinical studies of Breyanzi?

Most likely\* to happen around



**after infusion**  
Range: 1–63 days

Most likely\* to improve around



**after onset**  
Range: 1–37 days

\*Based on **median** days from the clinical study.

- The Breyanzi clinical studies included a total of 614 people. 53% of them experienced CRS
  - 49% of people had mild to moderate CRS
  - 4% of people experienced severe CRS

You will need to stay near the treatment center for at least 4 weeks to be monitored for side effects.

If you have a fever (100.4°F/38°C or higher) or show any other signs or symptoms of CRS, immediately call your healthcare provider, or go to the emergency room as instructed by your healthcare team.

### Important Safety Information (cont'd)

#### What are the possible or reasonably likely side effects of BREYANZI?

The most common side effects of BREYANZI are:

- fatigue
- difficulty breathing

Please see Important Safety Information throughout and full **Prescribing Information**, including **Boxed WARNINGS** and **Medication Guide**.



## Possible serious side effects to know about (cont'd)

**Neurologic toxicity**, or NT, is a serious side effect that can cause damage to the nervous system. It can cause brain disease, shaking, difficulty speaking, headache, dizziness, and can make it hard to think clearly.

### When did NT happen and how long did it last in clinical studies of Breyanzi®?

Most likely\* to happen around



after infusion  
Range: 1–63 days

Most likely\* to improve around



after onset  
Range: 1–119 days



\*Based on **median** days from the clinical study.

- The Breyanzi clinical studies included a total of 614 people. 31% of them experienced neurologic toxicity
  - 21% of people experienced mild to moderate neurologic toxicity
  - 10% of people experienced severe neurologic toxicity

If you have a fever (100.4°F/38°C or higher) or show any other signs or symptoms of NT, immediately call your healthcare provider, or go to the emergency room as instructed by your healthcare team.

### Important Safety Information (cont'd)

#### What are the possible or reasonably likely side effects of BREYANZI? (cont'd)

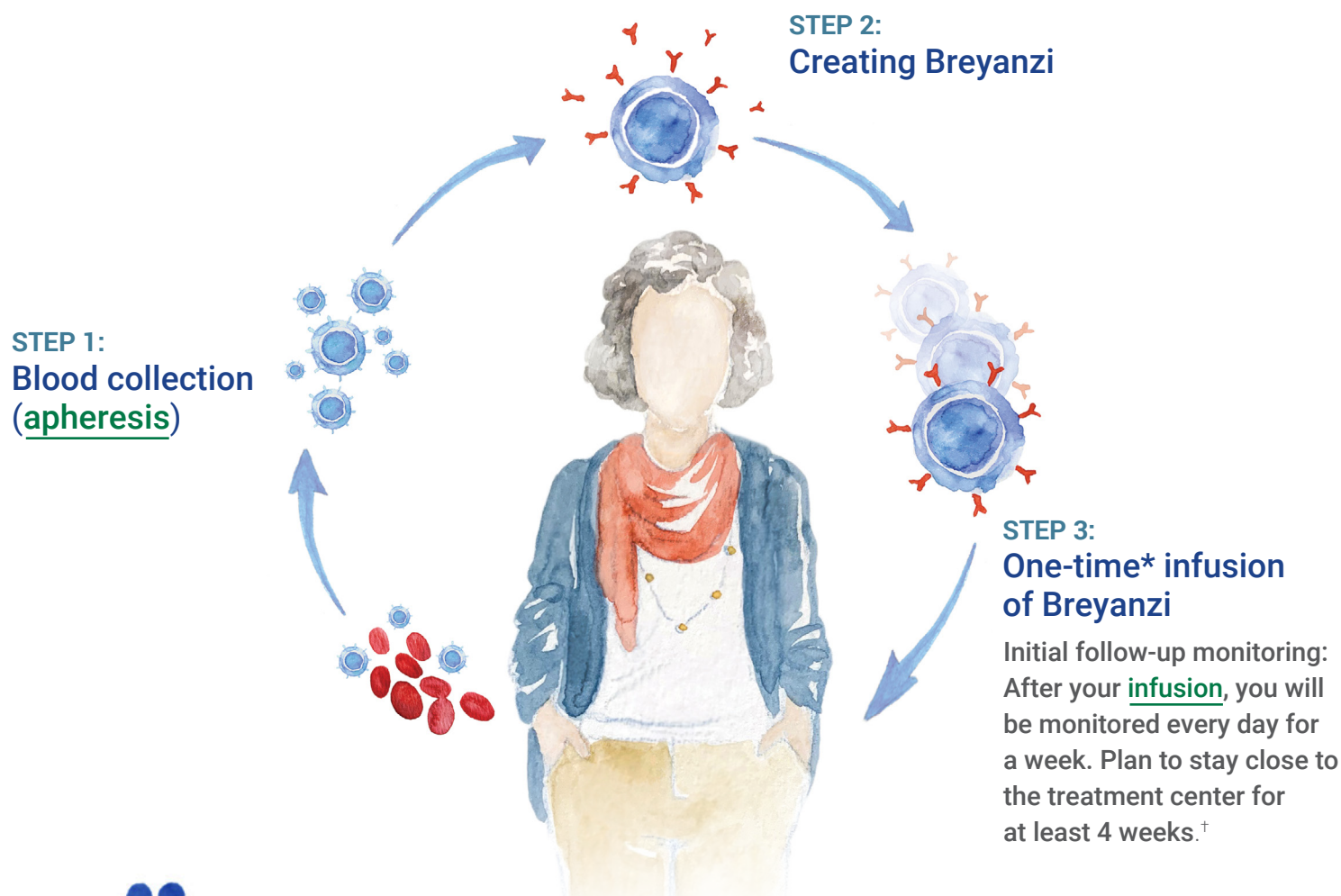
The most common side effects of BREYANZI are (cont'd):

- fever (100.4°F/38°C or higher)
- difficulty speaking or slurred speech
- chills/shaking chills
- severe nausea, vomiting, diarrhea
- confusion

Please see Important Safety Information throughout and full **Prescribing Information**, including **Boxed WARNINGS** and **Medication Guide**.

# Treatment with Breyanzi is centered around YOU

A one-time\* infusion of Breyanzi involves a few different steps, which take about 2 to 3 months from start to finish. Your healthcare team will be with you throughout the process.



[My doctor] said to think of [my CAR T cells] as little soldiers that are there to help kill the cancer cells. The cells that were altered would recognize cancer cells, as well as some healthy cells, and attack them.

Patient treated with Breyanzi

\*The treatment process includes blood collection, CAR T cell creation, administration, and side-effect monitoring. No maintenance therapy for the cancer is needed after Breyanzi as long as you are responding to treatment.

<sup>†</sup>Some patients treated with Breyanzi may develop other cancers. Your healthcare team will provide lifelong monitoring for these cancers.

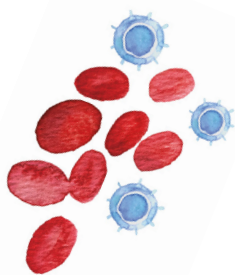
## Important Safety Information (cont'd)

### What are the possible or reasonably likely side effects of BREYANZI? (cont'd)

The most common side effects of BREYANZI are (cont'd):

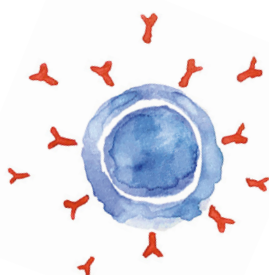
- headache
- dizziness/lightheadedness

Please see Important Safety Information throughout and full Prescribing Information, including **Boxed WARNINGS** and Medication Guide.

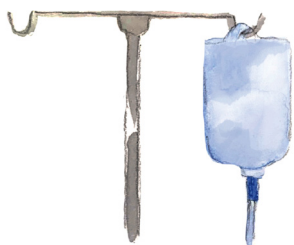
**STEP 1:****Blood collection**

Your white blood cells will be collected through a process called **apheresis** (sometimes called leukapheresis)

- Your blood is drawn, and the components are separated into groups
- Your **T cells** are collected and the other parts of your blood are returned back into your body
- Apheresis can be done in **1 day** and usually takes **2 to 6 hours**

**STEP 2:****Creating Breyanzi****Making your Breyanzi CAR T cells**

- Your T cells will be sent to a special **manufacturing site** where the hooks—**CARs**—will be added. This may take about **3 to 4 weeks**, but time can vary
- During this time, you may receive other treatments for the follicular lymphoma

**STEP 3:****Receiving Breyanzi****Before your Breyanzi infusion, you'll receive low-dose chemotherapy**

- You'll receive **3 days** of a low-dose chemotherapy, called lymphodepleting chemotherapy, to help prepare your body for Breyanzi

**You'll be given Breyanzi as a one-time infusion\***

- Through this infusion, you'll receive 2 different types of cells given one right after the other
- The time for infusion will vary but will usually be **less than 15 minutes** for each of the 2 cell types

\*2–7 days after receiving low-dose chemotherapy.

**Important Safety Information (cont'd)****What are the possible or reasonably likely side effects of BREYANZI? (cont'd)**

The most common side effects of BREYANZI are (cont'd):

- fast or irregular heartbeat
- low blood pressure
- swelling
- muscle pain

Please see Important Safety Information throughout and full **Prescribing Information**, including **Boxed WARNINGS** and **Medication Guide**.



## Monitoring

### You'll be closely monitored for side effects following your Breyanzi infusion

- Breyanzi will be given at an **authorized treatment center** by a specially trained healthcare team. Your doctor will decide if you need to stay in the hospital or if you can leave after treatment
- During the first week, you will be monitored daily by the facility where you receive Breyanzi. Plan to stay close to this location for **at least 4 weeks after infusion**
- You may be hospitalized for side effects, and your healthcare provider will discharge you if your side effects are under control and it is safe for you to leave

### Follow-up monitoring

- Your healthcare provider will want to do blood tests to follow your progress. It is important that you do have your blood tested. If you miss an appointment, call your healthcare provider as soon as possible to reschedule

### Long-term monitoring for secondary cancers

- Some patients treated with Breyanzi may develop other cancers. Your healthcare team will provide lifelong monitoring for these cancers



To find a location near you,  
visit [breyanzi.com/find-a-treatment-center](https://breyanzi.com/find-a-treatment-center).

## Important Safety Information (cont'd)

### What are the possible or reasonably likely side effects of BREYANZI? (cont'd)

BREYANZI can increase the risk of life-threatening infections that may lead to death. Tell your healthcare provider right away if you develop fever, chills, or any signs or symptoms of an infection.

BREYANZI can lower one or more types of your blood cells (red blood cells, white blood cells, or platelets). After treatment, your healthcare provider will test your blood to check for this. Tell your healthcare provider right away if you get a fever, are feeling tired, or have bruising or bleeding.

Please see Important Safety Information throughout and full **Prescribing Information**, including **Boxed WARNINGS** and **Medication Guide**.

# Caring for someone being treated with Breyanzi<sup>®</sup>

Having a care partner is an important part of treatment—and being that care partner means helping the person you’re caring for in many ways. You may be organizing day-to-day activities, like doctor visits, scheduling appointments, monitoring for side effects, or you may just be a hand to hold.



## Staying organized

- Ask questions at any point during treatment
- Bring important information (list of allergies and other medication the person you are caring for is taking) to appointments
- Keep the healthcare team’s contact information in a convenient place. There’s a place to write down this information on **page 24**.

## Helping with day-to-day activities

- Schedule upcoming appointments
- Transportation to appointments
- Relay medical and insurance information to the healthcare team
- Refill other prescription medications
- Meals, laundry, and cleaning
- Manage visitors





## Providing medical support

- Call 911 and/or the person's healthcare team in the event of a medical emergency or if they show signs of a serious side effect
- Accompany the person throughout their Breyanzi<sup>®</sup> treatment
- Check the person's temperature regularly following treatment
  - Call the healthcare provider or go to the hospital if temperature is 100.4°F/38.0°C or higher
- Watch for symptoms, side effects, and other changes in health or behavior

## Monitoring for side effects

When the person you're caring for has received their treatment, their healthcare provider will tell you what side effects to watch out for.

Breyanzi may cause side effects that are life-threatening and can lead to death. As the care partner, you will need to be able to recognize if the person needs help and know how to respond appropriately in emergencies and urgent situations.

If you think that the person you're caring for is experiencing side effects, call their healthcare team and/or 911.



## Taking care of yourself

You're an essential part of the care team for the person you're looking after, and taking on the role can be demanding. That's why it is important that you:

- Get rest and take time for yourself
- Eat consistent meals and stay hydrated
- Reach out for support from:
  - Your loved one's healthcare team
  - Therapists, counselors, or spiritual leaders
  - Other care partners
  - Friends and family
  - Support groups





## Personalized support throughout your Breyanzi® treatment



### A dedicated Patient Support Navigator

If you are receiving Bristol Myers Squibb CAR T cell therapy and you choose to enroll in the Cell Therapy 360® Patient Support Program, you will be assigned a personal Patient Support Navigator to provide customized solutions and support throughout your treatment journey.

\*Eligibility requirements apply.



### Logistical support\*

Cell Therapy 360 may be able to support eligible patients and a caregiver with transportation, lodging, and meal assistance throughout the patient journey.



### Financial support\*

Cell Therapy 360 offers financial assistance for eligible patients, which may help with copay costs and access to a Bristol Myers Squibb CAR T cell therapy product.

### To learn more about Cell Therapy 360:



- Talk to your healthcare team
- Call **1-888-805-4555** (available Monday through Sunday for 24/7 on-call assistance)
- Visit **CellTherapy360.com**

Breyanzi is made possible by a team of people dedicated to helping you reach complete and lasting remission, and finding freedom from ongoing follicular lymphoma treatment.

If a CAR T cell therapy treatment center decides a Bristol Myers Squibb CAR T cell therapy is right for you, Cell Therapy 360 offers solutions-oriented programs for you and your caregiver. The assistance programs are designed to support you throughout your treatment journey. Eligibility requirements may apply.

Please see Important Safety Information throughout and full Prescribing Information, including **Boxed WARNINGS** and Medication Guide.



# Questions to ask your doctor about Breyanzi<sup>®</sup>

Here are a few questions you can use to start a conversation with your doctor to see if Breyanzi is right for you. Print these pages to fill in at your appointment, or type the doctor's answers right into this page for your records.

## ABOUT BREYANZI

### What is Breyanzi?

---

---

---

---

### How is Breyanzi different from other treatments?

---

---

---

---

### Is remission possible with Breyanzi?

---

---

---

---



## Questions to ask your doctor about Breyanzi<sup>®</sup> (cont'd)

---

How do results seen with Breyanzi compare to other treatments?

---

---

---

---

What side effects should I be aware of?

---

---

---

---

What can I expect after treatment?

---

---

---

---

When/how will I know if it worked?

---

---

---

---



# Questions to ask your doctor about Breyanzi<sup>®</sup> (cont'd)

## GETTING EVALUATED FOR TREATMENT

**Is Breyanzi right for me?**

---

---

---

---

---

**Do I need a referral to a treatment center? How can we get this process started?**

---

---

---

---

---

## WHAT TO EXPECT

**What is involved in the treatment process? Will you be available throughout?**

---

---

---

---

---



## Questions to ask your doctor about Breyanzi<sup>®</sup> (cont'd)

---

Where will I receive Breyanzi?

---

---

---

---

---

What will my daily life be like during the Breyanzi treatment process?

---

---

---

---

---

Do I need to stay in the hospital after receiving Breyanzi? For how long?

---

---

---

---

---



## Questions to ask your doctor about Breyanzi<sup>®</sup> (cont'd)

Is it possible to be treated and not stay in the hospital?

---

---

---

---

---

### SUPPORT

Do I need to have a care partner with me throughout treatment?

---

---

---

---

---

Are there support programs available through Bristol Myers Squibb, or other organizations, that can help me throughout the treatment process?

---

---

---

---

---



# Keeping track of your healthcare team's contact information

---

Fill in important contact information so you can stay in touch with members of your healthcare team.

NAME:

PHONE NUMBER:

NOTES:

NAME:

PHONE NUMBER:

NOTES:

NAME:

PHONE NUMBER:

NOTES:

NAME:

PHONE NUMBER:

NOTES:



# Important words to know and understand

---

**Apheresis:** The process of taking blood out of the body, removing certain parts of the blood, and then reintroducing the blood back into the body. This process is done in CAR T cell therapy to remove T cells before adding CARs to them. May also be called leukapheresis.

**Authorized treatment center:** The place where you will receive Breyanzi® CAR T cell therapy. The healthcare team at these centers have been specially trained on how to administer and manage side effects of CAR T cell therapy.

**Copay:** The out-of-pocket amount you pay for a healthcare service that is covered by your insurance plan, often after you've paid your deductible.

**Cytokine:** A type of protein that is made by certain immune and non-immune cells and has an effect on the immune system. Some cytokines stimulate the immune system and others slow it down.

**Cytokine release syndrome (CRS):** A side effect of CAR T cell therapy that is potentially life-threatening and can lead to death. It is caused by a large, rapid release of cytokines, a type of protein, into the blood.

**Immune system:** The body's natural defense against infection and diseases, including cancer.

**Infusion:** The method of putting fluids, including medicine, into the bloodstream using an intravenous (IV) method.

**Manufacturing site:** Where your T cells will be sent to become Breyanzi CAR T cells.

**Median:** The middle number in a group of numbers arranged from lowest to highest.

**Neurologic toxicity (NT):** A side effect of CAR T cell therapy that is potentially life-threatening and can lead to death. It can cause damage to the nervous system.

**Receptors:** Structures on the surface of the cell that some substances can attach to.

**Remission:** When there are no signs or symptoms of FL. It does not mean the cancer has been cured.

**T cell:** A type of cell found in the immune system that plays a role in fighting disease, including cancer.

# REMISSION POWERED BY YOU.

With a one-time\* infusion of Breyanzi®, a CAR T cell therapy, you have the chance for complete and lasting remission.†

Find a certified treatment center near you at  
[breyanzi.com/find-a-treatment-center](https://breyanzi.com/find-a-treatment-center).

\*The treatment process includes blood collection, CAR T cell creation, administration, and side-effect monitoring. No maintenance therapy for the lymphoma is needed after Breyanzi as long as you are responding to treatment.

†Most people treated with Breyanzi who had no signs of follicular lymphoma continued to be in complete [remission](#). Because this does not mean the lymphoma has been cured, regular check-ins with your healthcare team are still needed, and you may have to take medication to manage side effects.

## Important Safety Information (cont'd)

### What are the possible or reasonably likely side effects of BREYANZI? (cont'd)

BREYANZI may increase your risk of getting cancers including certain types of blood cancers. Your healthcare provider should monitor you for this.

Having BREYANZI in your blood may cause a false-positive HIV test result by some commercial tests.

These are not all the possible side effects of BREYANZI. Call your doctor for medical advice about side effects. For more information, go to [BREYANZI.com](https://BREYANZI.com) or call 1-888-805-4555. You may report side effects to the FDA. Visit [www.fda.gov/medwatch](https://www.fda.gov/medwatch) or call 1-800-FDA-1088.

**Please see Important Safety Information throughout and full [Prescribing Information](#), including [Boxed WARNINGS](#) and [Medication Guide](#).**



© 2024 Juno Therapeutics, Inc., a Bristol Myers Squibb company. All Rights Reserved.  
BREYANZI and the related logo are trademarks of Juno Therapeutics, Inc., a Bristol Myers Squibb company. CELL THERAPY 360 and the related logo are trademarks of Celgene Corporation, a Bristol Myers Squibb company. 05/24 2009-US-2300325



RELAPSED/REFRACTORY  
**Follicular lymphoma (FL)**

# REMISSION IS POSSIBLE. POWERED BY YOU.

With a one-time\*  
a CAR T cell therapy  
for complete and

## Remission:

When there are no signs or symptoms of FL.  
It does not mean the lymphoma has been cured.



CAR, chimeric antigen receptor

\*The treatment process includes blood collection, CAR T cell creation, administration, and side-effect monitoring. No maintenance therapy for the lymphoma is needed after Breyanzi as long as you are responding to treatment.

\*Most people treated with Breyanzi who had no signs of follicular lymphoma continued to be in complete remission. Because this does not mean the lymphoma has been cured, regular check-ins with your healthcare team are still needed, and you may have to take medication to manage side effects.

## Indication

BREYANZI is a prescription medicine used to treat a type of non-Hodgkin lymphoma called follicular lymphoma, when two or more kinds of treatment have not worked or stopped working.

BREYANZI is different than other cancer medicines because it is made from your own white blood cells, which have been genetically modified to recognize and attack your lymphoma cells.

## Important Safety Information

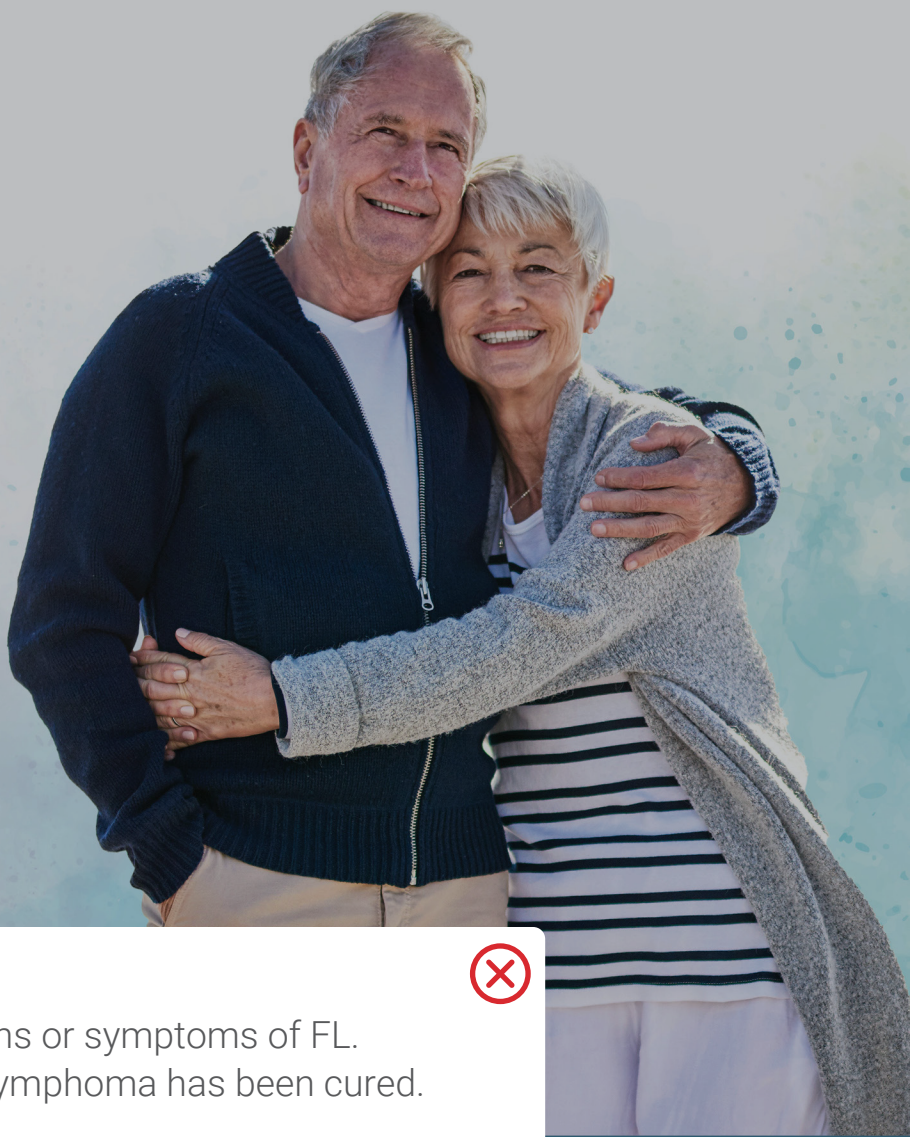
### What is the most important information I should know about BREYANZI?

BREYANZI may cause side effects that are life-threatening and can lead to death. Call your healthcare provider or get emergency help right away if you get any of the following:

- difficulty breathing
- fever (100.4°F/38°C or higher)
- chills/shaking chills
- confusion
- severe nausea, vomiting, diarrhea
- fast or irregular heartbeat
- dizziness/lightheadedness
- severe fatigue or weakness

It is important that you tell your healthcare providers that you have received BREYANZI and to show them your BREYANZI Patient Wallet Card. Your healthcare provider may give you other medicines to treat your side effects.

**Please see Important Safety Information throughout and full Prescribing Information, including Boxed WARNINGS and Medication Guide.**





# When it's time for a new approach to treatment

While there are several treatment options available for follicular lymphoma (FL), you may have found that they stop working over time or your cancer has come back.

## Infusion:

The method of putting fluids, including medicine, into the bloodstream using an intravenous (IV) method.



Breyanzi is a one-time\* infusion shown to provide remission from follicular lymphoma, while freeing you from ongoing treatment.<sup>†</sup>



I would strongly urge anyone [who] is a candidate or thinks they may be a candidate for Breyanzi CAR T therapy to ask your doctor about it.

Patient treated with Breyanzi

\*The treatment process includes blood collection, CAR T cell creation, administration, and side-effect monitoring.

<sup>†</sup>While regular check-ins with your healthcare team are still required, no maintenance therapy for the lymphoma may be needed after Breyanzi, as long as you are responding to treatment.

## Important Safety Information (cont'd)

**Before getting BREYANZI, tell your healthcare provider about all your medical problems, including if you have or have had:**

- Neurologic problems (such as seizures, stroke, or memory loss)
- Lung or breathing problems
- Heart problems
- Liver problems
- Kidney problems
- A recent or active infection

**Tell your healthcare provider about all the medications you take**, including prescription and over-the-counter medicines, vitamins, and herbal supplements.

**Please see Important Safety Information throughout and full Prescribing Information, including Boxed WARNINGS and Medication Guide.**

**Immune system:**

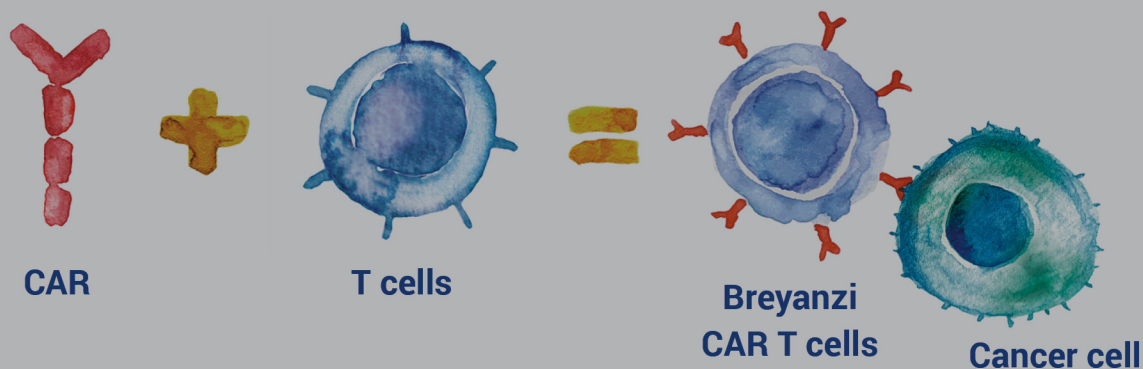
The body's natural defense against infection and diseases, including cancer.



Cancer

on your own immune system.

- Your immune system is made up of many cells that help protect the body from disease
- One key immune cell is the T cell
- There are hooks, called receptors, on the outer surface of each T cell that can help find and fight cancer. However, some types of cancer can avoid T cells and keep growing—and that's where Breyanzi can make a difference

**How Breyanzi is made and how it works in your body**

- With Breyanzi, hooks, called CARs, are added to your T cells
- Once the Breyanzi CAR T cells are made, they'll be put back into your body through an infusion
- After the infusion, the CAR T cells look for a marker found on certain cancer cells, as well as on some healthy cells
- Breyanzi attaches to the marker on cancer cells that allows Breyanzi and your body to find and fight cancer

**Important Safety Information (cont'd)****How will I receive BREYANZI? (cont'd)**

- During the first week after infusion, you will be monitored daily by the facility where you received your treatment.
- You should plan to stay within 2 hours of the location where you received your treatment for at least 4 weeks after getting BREYANZI. Your healthcare provider will check to see that your treatment is working and help you with any side effects that may occur.

Please see Important Safety Information throughout and full Prescribing Information, including **Boxed WARNINGS** and Medication Guide.



## Powered to find and fight cancer

### T cell:

A type of cell found in the immune system that plays a role in fighting disease, including cancer.

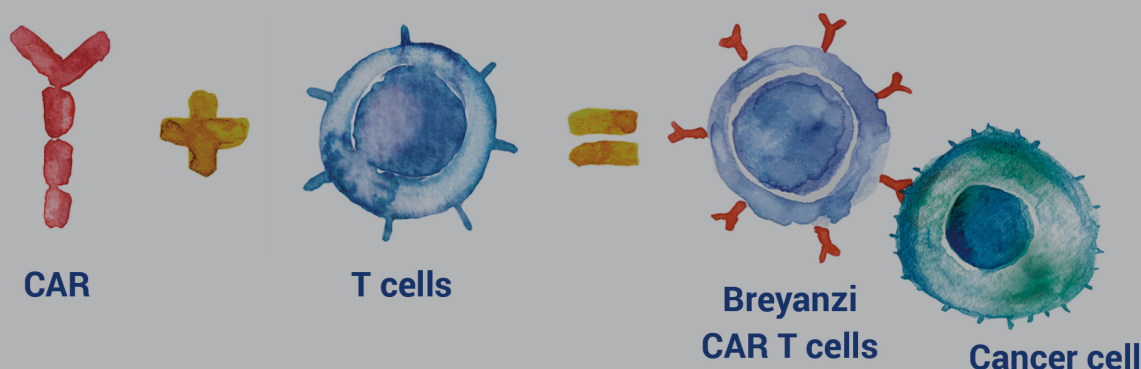


in your own immune system.

Your immune system is made up of many cells that help protect the body from disease

- One key immune cell is the T cell
- There are hooks, called receptors, on the outer surface of each T cell that can help find and fight cancer. However, some types of cancer can avoid T cells and keep growing—and that's where Breyanzi can make a difference

### How Breyanzi is made and how it works in your body



- With Breyanzi, hooks, called CARs, are added to your T cells
- Once the Breyanzi CAR T cells are made, they'll be put back into your body through an infusion
- After the infusion, the CAR T cells look for a marker found on certain cancer cells, as well as on some healthy cells
- Breyanzi attaches to the marker on cancer cells that allows Breyanzi and your body to find and fight cancer

### Important Safety Information (cont'd)

#### How will I receive BREYANZI? (cont'd)

- During the first week after infusion, you will be monitored daily by the facility where you received your treatment.
- You should plan to stay within 2 hours of the location where you received your treatment for at least 4 weeks after getting BREYANZI. Your healthcare provider will check to see that your treatment is working and help you with any side effects that may occur.

Please see Important Safety Information throughout and full Prescribing Information, including **Boxed WARNINGS** and Medication Guide.



# Powered to find and fight cancer

## Receptors:

Structures on the surface of the cell that some substances can attach to.

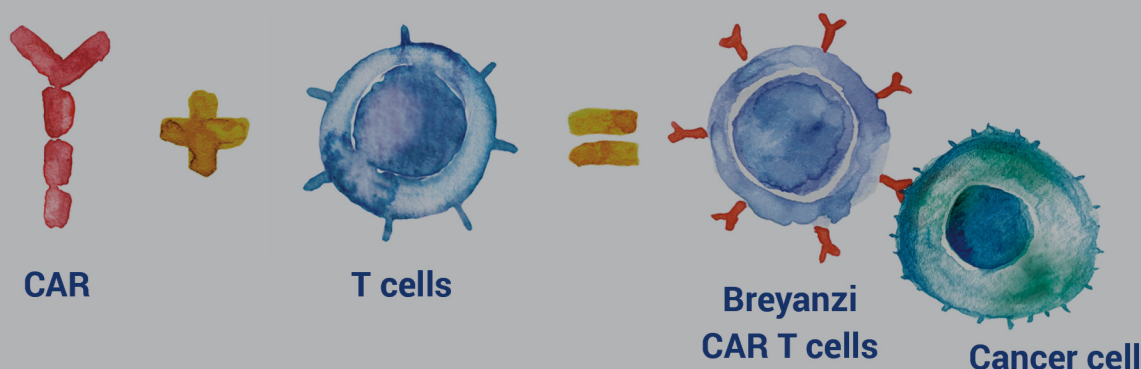


in your own immune system.

ect the body from disease

- There are hooks, called receptors, on the outer surface of each T cell that can help find and fight cancer. However, some types of cancer can avoid T cells and keep growing—and that's where Breyanzi can make a difference

## How Breyanzi is made and how it works in your body



- With Breyanzi, hooks, called CARs, are added to your T cells
- Once the Breyanzi CAR T cells are made, they'll be put back into your body through an infusion
- After the infusion, the CAR T cells look for a marker found on certain cancer cells, as well as on some healthy cells
- Breyanzi attaches to the marker on cancer cells that allows Breyanzi and your body to find and fight cancer

## Important Safety Information (cont'd)

### How will I receive BREYANZI? (cont'd)

- During the first week after infusion, you will be monitored daily by the facility where you received your treatment.
- You should plan to stay within 2 hours of the location where you received your treatment for at least 4 weeks after getting BREYANZI. Your healthcare provider will check to see that your treatment is working and help you with any side effects that may occur.

Please see Important Safety Information throughout and full Prescribing Information, including **Boxed WARNINGS** and Medication Guide.



# Powered to find and fight cancer

Breyanzi is created specifically for you using cells from your own immune system.

- Your immune system is made up of many cells that help protect the body from disease
- One key immune cell is the T cell
- There are hooks, called receptors, on the outer surface of each T cell that can help find and fight cancer. However, some types of cancer can avoid T cells and keep growing—and that's where Breyanzi can make a difference

## How Breyanzi is made and how it works in your body



### Infusion:

The method of putting fluids, including medicine, into the bloodstream using an intravenous (IV) method.

- With Breyanzi, hooks, called receptors, are attached to your T cells
- Once the Breyanzi CAR T cells are made, they'll be put back into your body through an infusion
- After the infusion, the CAR T cells look for a marker found on certain cancer cells, as well as on some healthy cells
- Breyanzi attaches to the marker on cancer cells that allows Breyanzi and your body to find and fight cancer

## Important Safety Information (cont'd)

### How will I receive BREYANZI? (cont'd)

- During the first week after infusion, you will be monitored daily by the facility where you received your treatment.
- You should plan to stay within 2 hours of the location where you received your treatment for at least 4 weeks after getting BREYANZI. Your healthcare provider will check to see that your treatment is working and help you with any side effects that may occur.

Please see Important Safety Information throughout and full Prescribing Information, including **Boxed WARNINGS** and Medication Guide.

### Cytokine release syndrome (CRS):

A side effect of CAR T cell therapy that is potentially life-threatening and can lead to death. It is caused by a large, rapid release of cytokines, a type of protein, into the blood.



Po

now about

Breyanzi can lead to death. Your healthcare team is trained to manage the side effects of Breyanzi, such as **cytokine release syndrome (CRS)** and **neurologic toxicity (NT)**.

CRS happens when the immune cells release a large amount of proteins, called **cytokines**, into the blood. Some symptoms of CRS include fever, chills, fast heart rate, headache, and not enough oxygen getting into the tissues of the body.



### When did CRS happen and how long did it last in clinical studies of Breyanzi?

Most likely\* to happen around



after infusion  
Range: 1–63 days

Most likely\* to improve around



after onset  
Range: 1–37 days

\*Based on **median** days from the clinical study.

- The Breyanzi clinical studies included a total of 614 people. 53% of them experienced CRS
  - 49% of people had mild to moderate CRS
  - 4% of people experienced severe CRS

You will need to stay near the treatment center for at least 4 weeks to be monitored for side effects.

If you have a fever (100.4°F/38°C or higher) or show any other signs or symptoms of CRS, immediately call your healthcare provider, or go to the emergency room as instructed by your healthcare team.

### Important Safety Information (cont'd)

#### What are the possible or reasonably likely side effects of BREYANZI?

The most common side effects of BREYANZI are:

- fatigue
- difficulty breathing

Please see Important Safety Information throughout and full **Prescribing Information**, including **Boxed WARNINGS** and **Medication Guide**.



## Possible

### Neurologic toxicity (NT):

A side effect of CAR T cell therapy that is potentially life-threatening and can lead to death. It can cause damage to the nervous system.



## about

Breyanzi<sup>®</sup> may cause side effects, some of which can be serious or life-threatening. Your healthcare team is trained to manage the side effects of Breyanzi, such as **cytokine release syndrome (CRS)** and **neurologic toxicity (NT)**.

CRS happens when the immune cells release a large amount of proteins, called **cytokines**, into the blood. Some symptoms of CRS include fever, chills, fast heart rate, headache, and not enough oxygen getting into the tissues of the body.



### When did CRS happen and how long did it last in clinical studies of Breyanzi?

Most likely\* to happen around



**after infusion**  
Range: 1–63 days

Most likely\* to improve around



**after onset**  
Range: 1–37 days

\*Based on **median** days from the clinical study.

- The Breyanzi clinical studies included a total of 614 people. 53% of them experienced CRS
  - 49% of people had mild to moderate CRS
  - 4% of people experienced severe CRS

You will need to stay near the treatment center for at least 4 weeks to be monitored for side effects.

If you have a fever (100.4°F/38°C or higher) or show any other signs or symptoms of CRS, immediately call your healthcare provider, or go to the emergency room as instructed by your healthcare team.

### Important Safety Information (cont'd)

#### What are the possible or reasonably likely side effects of BREYANZI?

The most common side effects of BREYANZI are:

- fatigue
- difficulty breathing

Please see Important Safety Information throughout and full **Prescribing Information**, including **Boxed WARNINGS** and **Medication Guide**.



### Cytokine:

A type of protein that is made by certain immune and non-immune cells and has an effect on the immune system. Some cytokines stimulate the immune system and others slow it down.



## What you need to know about

...ing and can lead  
 ...ects of Breyanzi,  
 ...city (NT).



CRS happens when the immune cells release a large amount of proteins, called **cytokines**, into the blood. Some symptoms of CRS include fever, chills, fast heart rate, headache, and not enough oxygen getting into the tissues of the body.

### When did CRS happen and how long did it last in clinical studies of Breyanzi?

Most likely\* to  
happen around



**5  
days**  
 after infusion  
 Range: 1–63 days

Most likely\* to  
improve around



**5  
days**  
 after onset  
 Range: 1–37 days

\*Based on **median** days from the clinical study.

- The Breyanzi clinical studies included a total of 614 people. 53% of them experienced CRS
  - 49% of people had mild to moderate CRS
  - 4% of people experienced severe CRS

You will need to stay near the treatment center for at least 4 weeks to be monitored for side effects.

If you have a fever (100.4°F/38°C or higher) or show any other signs or symptoms of CRS, immediately call your healthcare provider, or go to the emergency room as instructed by your healthcare team.

### Important Safety Information (cont'd)

#### What are the possible or reasonably likely side effects of BREYANZI?

The most common side effects of BREYANZI are:

- fatigue
- difficulty breathing

Please see Important Safety Information throughout and full **Prescribing Information**, including **Boxed WARNINGS** and **Medication Guide**.



## Possible serious side effects to know about

Breyanzi<sup>®</sup> may cause serious side effects that are life-threatening and can lead to death. Your healthcare team is trained to manage the side effects of Breyanzi, such as **cytokine release syndrome (CRS)** and **neurologic toxicity (NT)**.

CRS happens when the immune cells release a large amount of proteins, called **cytokines**, into the blood. Some symptoms of CRS include fever, chills, fast heart rate, headache, and not enough oxygen getting into the tissues of the body.



### When did CRS happen and how long did it last in clinical studies of Breyanzi?

Most likely\* to happen around



**5**  
days

after infusion

Range: 1–63 days

#### Median:

The middle number in a group of numbers arranged from lowest to highest.



days

after onset

Range: 1–37 days

\*Based on **median** days from the clinical study.

- The Breyanzi clinical studies included a total of 614 people. 53% of them experienced CRS
  - 49% of people had mild to moderate CRS
  - 4% of people experienced severe CRS

You will need to stay near the treatment center for at least 4 weeks to be monitored for side effects.

If you have a fever (100.4°F/38°C or higher) or show any other signs or symptoms of CRS, immediately call your healthcare provider, or go to the emergency room as instructed by your healthcare team.

### Important Safety Information (cont'd)

#### What are the possible or reasonably likely side effects of BREYANZI?

The most common side effects of BREYANZI are:

- fatigue
- difficulty breathing

Please see Important Safety Information throughout and full **Prescribing Information**, including **Boxed WARNINGS** and **Medication Guide**.

**Neurologic toxicity (NT):**

A side effect of CAR T cell therapy that is potentially life-threatening and can lead to death. It can cause damage to the nervous system.



## What you need to know about (cont'd)

**Neurologic toxicity**, or NT, is a serious side effect that can cause damage to the nervous system. It can cause brain disease, shaking, difficulty speaking, headache, dizziness, and can make it hard to think clearly.

### When did NT happen and how long did it last in clinical studies of Breyanzi®?

Most likely\* to happen around



after infusion  
Range: 1–63 days

Most likely\* to improve around



after onset  
Range: 1–119 days



\*Based on **median** days from the clinical study.

- The Breyanzi clinical studies included a total of 614 people. 31% of them experienced neurologic toxicity
  - 21% of people experienced mild to moderate neurologic toxicity
  - 10% of people experienced severe neurologic toxicity

If you have a fever (100.4°F/38°C or higher) or show any other signs or symptoms of NT, immediately call your healthcare provider, or go to the emergency room as instructed by your healthcare team.

### Important Safety Information (cont'd)

#### What are the possible or reasonably likely side effects of BREYANZI? (cont'd)

The most common side effects of BREYANZI are (cont'd):

- fever (100.4°F/38°C or higher)
- difficulty speaking or slurred speech
- chills/shaking chills
- severe nausea, vomiting, diarrhea
- confusion

Please see Important Safety Information throughout and full Prescribing Information, including **Boxed WARNINGS** and Medication Guide.



## Possible serious side effects to know about (cont'd)

**Neurologic toxicity**, or NT, is a serious side effect that can cause damage to the nervous system. It can cause brain disease, shaking, difficulty speaking, headache, dizziness, and can make it hard to think clearly.



### When did NT happen and how long did it last in clinical studies of Breyanzi®?

Most likely\* to happen around



**8 days**  
after infusion  
Range: 1–63 days

#### Median:

The middle number in a group of numbers arranged from lowest to highest.



**119 days**  
after onset  
Range: 1–119 days

\*Based on median days from the clinical study.

- The Breyanzi clinical studies included a total of 614 people. 31% of them experienced neurologic toxicity
  - 21% of people experienced mild to moderate neurologic toxicity
  - 10% of people experienced severe neurologic toxicity

If you have a fever (100.4°F/38°C or higher) or show any other signs or symptoms of NT, immediately call your healthcare provider, or go to the emergency room as instructed by your healthcare team.

### Important Safety Information (cont'd)

#### What are the possible or reasonably likely side effects of BREYANZI? (cont'd)

The most common side effects of BREYANZI are (cont'd):

- fever (100.4°F/38°C or higher)
- difficulty speaking or slurred speech
- chills/shaking chills
- severe nausea, vomiting, diarrhea
- confusion

Please see Important Safety Information throughout and full Prescribing Information, including **Boxed WARNINGS** and Medication Guide.



# Treatment with Breyanzi is centered around YOU

A one-time\* infusion of Breyanzi involves a few different steps, which take about 2 to 3 months from start to finish. Your healthcare team will be with you throughout the process.

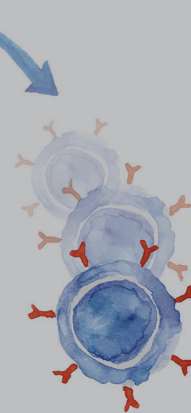
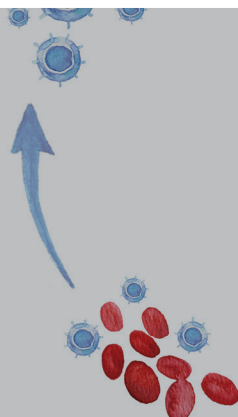
## Apheresis:

The process of taking blood out of the body, removing certain parts of the blood, and then reintroducing the blood back into the body. This process is done in CAR T cell therapy to remove T cells before adding CARs to them. May also be called leukapheresis.



STEP 2:  
Preparing Breyanzi

Blood Collection  
(apheresis)



STEP 3:  
One-time\* infusion  
of Breyanzi

Initial follow-up monitoring:  
After your infusion, you will  
be monitored every day for  
a week. Plan to stay close to  
the treatment center for  
at least 4 weeks.<sup>†</sup>



[My doctor] said to think of [my CAR T cells] as little soldiers that are there to help kill the cancer cells. The cells that were altered would recognize cancer cells, as well as some healthy cells, and attack them.

Patient treated with Breyanzi

\*The treatment process includes blood collection, CAR T cell creation, administration, and side-effect monitoring. No maintenance therapy for the cancer is needed after Breyanzi as long as you are responding to treatment.

<sup>†</sup>Some patients treated with Breyanzi may develop other cancers. Your healthcare team will provide lifelong monitoring for these cancers.

## Important Safety Information (cont'd)

### What are the possible or reasonably likely side effects of BREYANZI? (cont'd)

The most common side effects of BREYANZI are (cont'd):

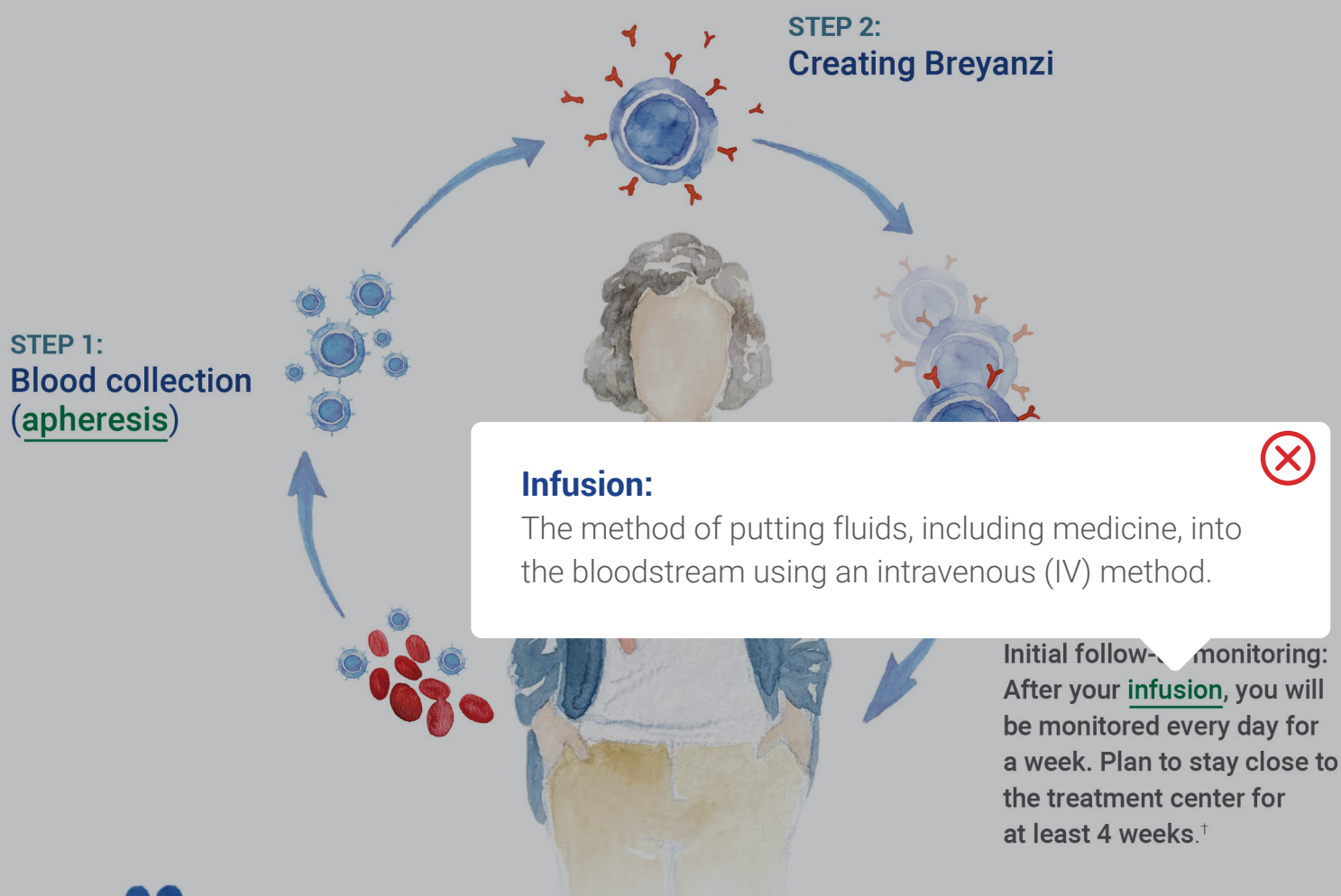
- headache
- dizziness/lightheadedness

Please see Important Safety Information throughout and full Prescribing Information, including **Boxed WARNINGS** and Medication Guide.



# Treatment with Breyanzi is centered around YOU

A one-time\* infusion of Breyanzi involves a few different steps, which take about 2 to 3 months from start to finish. Your healthcare team will be with you throughout the process.



[My doctor] said to think of [my CAR T cells] as little soldiers that are there to help kill the cancer cells. The cells that were altered would recognize cancer cells, as well as some healthy cells, and attack them.

Patient treated with Breyanzi

\*The treatment process includes blood collection, CAR T cell creation, administration, and side-effect monitoring. No maintenance therapy for the cancer is needed after Breyanzi as long as you are responding to treatment.

<sup>†</sup>Some patients treated with Breyanzi may develop other cancers. Your healthcare team will provide lifelong monitoring for these cancers.

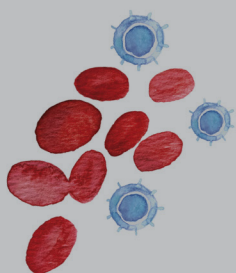
## Important Safety Information (cont'd)

### What are the possible or reasonably likely side effects of BREYANZI? (cont'd)

The most common side effects of BREYANZI are (cont'd):

- headache
- dizziness/lightheadedness

Please see Important Safety Information throughout and full Prescribing Information, including **Boxed WARNINGS** and Medication Guide.

**STEP 1:****Blood collection**

Your white blood cells will be collected through a process called **apheresis** (sometimes called leukapheresis)

- Your blood is drawn, and the components are separated into groups
- The parts of your blood are returned

**Apheresis:**

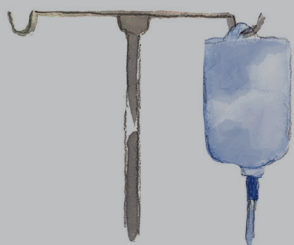
The process of taking blood out of the body, removing certain parts of it, and then returning the remaining blood back into the body. This process is done in CAR T therapy to remove T cells before adding CARs to them. May also be called leukapheresis.



usually takes **2 to 6 hours**

**Making your Breyanzi CAR T cells**

- Your T cells will be sent to a special **manufacturing site** where the hooks—**CARs**—will be added. This may take about **3 to 4 weeks**, but time can vary
- During this time, you may receive other treatments for the follicular lymphoma

**STEP 3:****Receiving Breyanzi**

**Before your Breyanzi infusion, you'll receive low-dose chemotherapy**

- You'll receive **3 days** of a low-dose chemotherapy, called lymphodepleting chemotherapy, to help prepare your body for Breyanzi

**You'll be given Breyanzi as a one-time infusion\***

- Through this infusion, you'll receive 2 different types of cells given one right after the other
- The time for infusion will vary but will usually be **less than 15 minutes** for each of the 2 cell types

\*2–7 days after receiving low-dose chemotherapy.

**Important Safety Information (cont'd)****What are the possible or reasonably likely side effects of BREYANZI? (cont'd)**

The most common side effects of BREYANZI are (cont'd):

- fast or irregular heartbeat
- low blood pressure
- swelling
- muscle pain

Please see Important Safety Information throughout and full **Prescribing Information**, including **Boxed WARNINGS** and **Medication Guide**.



## STEP 1:

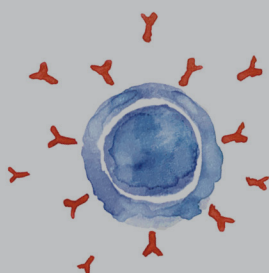
**T cell:**

A type of cell found in the immune system that plays a role in fighting disease, including cancer.



...d through a process called  
(apheresis)

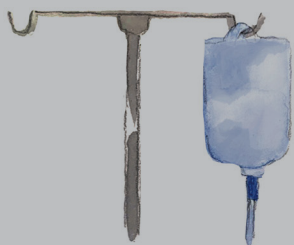
- Your blood is drawn, and the components are separated into groups
- Your **T cells** are collected and the other parts of your blood are returned back into your body
- Apheresis can be done in **1 day** and usually takes **2 to 6 hours**



## STEP 2:

**Creating Breyanzi****Making your Breyanzi CAR T cells**

- Your T cells will be sent to a special manufacturing site where the hooks—CARs—will be added. This may take about **3 to 4 weeks**, but time can vary
- During this time, you may receive other treatments for the follicular lymphoma



## STEP 3:

**Receiving Breyanzi****Before your Breyanzi infusion, you'll receive low-dose chemotherapy**

- You'll receive **3 days** of a low-dose chemotherapy, called lymphodepleting chemotherapy, to help prepare your body for Breyanzi

**You'll be given Breyanzi as a one-time infusion\***

- Through this infusion, you'll receive 2 different types of cells given one right after the other
- The time for infusion will vary but will usually be **less than 15 minutes** for each of the 2 cell types

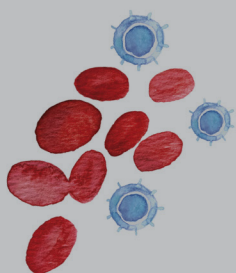
\*2–7 days after receiving low-dose chemotherapy.

**Important Safety Information (cont'd)****What are the possible or reasonably likely side effects of BREYANZI? (cont'd)**

The most common side effects of BREYANZI are (cont'd):

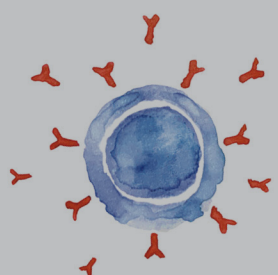
- fast or irregular heartbeat
- low blood pressure
- swelling
- muscle pain

Please see Important Safety Information throughout and full Prescribing Information, including **Boxed WARNINGS** and Medication Guide.

**STEP 1:****Blood collection**

Your white blood cells will be collected through a process called **apheresis** (sometimes called leukapheresis)

- Your blood is drawn, and the components are separated into groups
- Your **T cells** are collected and the other parts of your blood are returned back into your body
- Apheresis can be done in **1 day** and usually takes **2 to 6 hours**

**STEP 2:****Creating**

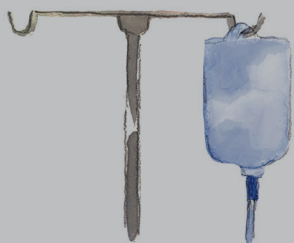
Making your Breyanzi CAR T cells

**Manufacturing site:**

Where your T cells will be sent to become Breyanzi CAR T cells.



- Your T cells will be sent to a special **manufacturing site** where the hooks—**CARs**—will be added. This may take about **3 to 4 weeks**, but time can vary
- During this time, you may receive other treatments for the follicular lymphoma

**STEP 3:****Receiving Breyanzi**

**Before your Breyanzi infusion, you'll receive low-dose chemotherapy**

- You'll receive **3 days** of a low-dose chemotherapy, called lymphodepleting chemotherapy, to help prepare your body for Breyanzi

**You'll be given Breyanzi as a one-time infusion\***

- Through this infusion, you'll receive 2 different types of cells given one right after the other
- The time for infusion will vary but will usually be **less than 15 minutes** for each of the 2 cell types

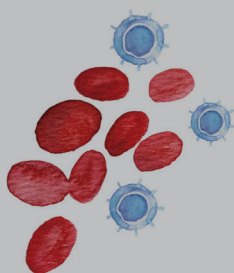
\*2–7 days after receiving low-dose chemotherapy.

**Important Safety Information (cont'd)****What are the possible or reasonably likely side effects of BREYANZI? (cont'd)**

The most common side effects of BREYANZI are (cont'd):

- fast or irregular heartbeat
- low blood pressure
- swelling
- muscle pain

Please see Important Safety Information throughout and full **Prescribing Information**, including **Boxed WARNINGS** and **Medication Guide**.

**STEP 1:****Blood collection**

Your white blood cells will be collected through a process called **apheresis** (sometimes called leukapheresis)

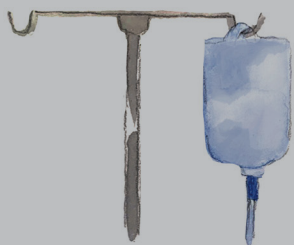
- Your blood is drawn, and the components are separated into groups
- Your **T cells** are collected and the other parts of your blood are returned back into your body
- Apheresis can be done in **1 day** and usually takes **2 to 6 hours**

**Chimeric antigen receptor (CAR):**

A specific receptor (or hook) that is added to a person's T cells. The receptor can find and fight specific cells.



- Your T cells will be sent to a special **manufacturing site** where the hooks—**CARs**—will be added. This may take about **3 to 4 weeks**, but time can vary
- During this time, you may receive other treatments for the follicular lymphoma

**STEP 3:****Receiving Breyanzi**

**Before your Breyanzi infusion, you'll receive low-dose chemotherapy**

- You'll receive **3 days** of a low-dose chemotherapy, called lymphodepleting chemotherapy, to help prepare your body for Breyanzi

**You'll be given Breyanzi as a one-time infusion\***

- Through this infusion, you'll receive 2 different types of cells given one right after the other
- The time for infusion will vary but will usually be **less than 15 minutes** for each of the 2 cell types

\*2–7 days after receiving low-dose chemotherapy.

**Important Safety Information (cont'd)****What are the possible or reasonably likely side effects of BREYANZI? (cont'd)**

The most common side effects of BREYANZI are (cont'd):

- fast or irregular heartbeat
- low blood pressure
- swelling
- muscle pain

Please see Important Safety Information throughout and full **Prescribing Information**, including **Boxed WARNINGS** and **Medication Guide**.



## More

### You'll be at an authorized treatment center for your Breyanzi infusion

#### Authorized treatment center.



The place where you will receive Breyanzi CAR T cell therapy. The healthcare team at these centers have been specially trained on how to administer and manage side effects of CAR T cell therapy.

- Breyanzi will be given at an **authorized treatment center** by a specially trained healthcare team. Your doctor will decide if you need to stay in the hospital or if you can leave after treatment
- During the first week, you will be monitored daily by the facility where you receive Breyanzi. Plan to stay close to this location for **at least 4 weeks after infusion**
- You may be hospitalized for side effects, and your healthcare provider will discharge you if your side effects are under control and it is safe for you to leave

### Follow-up monitoring

- Your healthcare provider will want to do blood tests to follow your progress. It is important that you do have your blood tested. If you miss an appointment, call your healthcare provider as soon as possible to reschedule

### Long-term monitoring for secondary cancers

- Some patients treated with Breyanzi may develop other cancers. Your healthcare team will provide lifelong monitoring for these cancers



To find a location near you,  
visit [breyanzi.com/find-a-treatment-center](https://breyanzi.com/find-a-treatment-center).

## Important Safety Information (cont'd)

### What are the possible or reasonably likely side effects of BREYANZI? (cont'd)

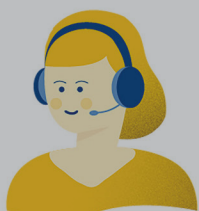
BREYANZI can increase the risk of life-threatening infections that may lead to death. Tell your healthcare provider right away if you develop fever, chills, or any signs or symptoms of an infection.

BREYANZI can lower one or more types of your blood cells (red blood cells, white blood cells, or platelets). After treatment, your healthcare provider will test your blood to check for this. Tell your healthcare provider right away if you get a fever, are feeling tired, or have bruising or bleeding.

Please see Important Safety Information throughout and full [Prescribing Information](#), including **Boxed WARNINGS** and [Medication Guide](#).



## Personalized support throughout your Breyanzi<sup>®</sup> treatment



### A dedicated Patient Support Navigator

If you are receiving Bristol Myers Squibb CAR T cell therapy and you choose to enroll in the Cell Therapy 360<sup>®</sup> Patient Support Program, you will be assigned a personal Patient Support Navigator to provide customized solutions and support throughout your treatment journey.

\*Eligibility requirements apply.

#### Copay:

Patient's out-of-pocket responsibility for a healthcare service covered by your insurance and typically after you have paid your deductible.



a caregiver with transportation, lodging, and meal assistance throughout the patient journey.

offers copay costs and access to a Bristol Myers Squibb CAR T cell therapy product.

### To learn more about Cell Therapy 360:



- Talk to your healthcare team
- Call **1-888-805-4555** (available Monday through Sunday for 24/7 on-call assistance)
- Visit **CellTherapy360.com**

Breyanzi is made possible by a team of people dedicated to helping you reach complete and lasting remission, and finding freedom from ongoing follicular lymphoma treatment.

If a CAR T cell therapy treatment center decides a Bristol Myers Squibb CAR T cell therapy is right for you, Cell Therapy 360 offers solutions-oriented programs for you and your caregiver. The assistance programs are designed to support you throughout your treatment journey. Eligibility requirements may apply.

Please see Important Safety Information throughout and full [Prescribing Information](#), including **Boxed WARNINGS** and [Medication Guide](#).

# REMISSION POWERED BY YOU.

With a one-time\* infusion of Breyanzi®, a CAR T cell therapy, you have the chance for complete and lasting remission.†

## Remission:

When there are no signs or symptoms of FL.  
It does not mean the cancer has been cured.



\*The treatment process includes blood collection, CAR T cell creation, administration, and side-effect monitoring. No maintenance therapy for the lymphoma is needed after Breyanzi as long as you are responding to treatment.

†Most people treated with Breyanzi who had no signs of follicular lymphoma continued to be in complete remission. Because this does not mean the lymphoma has been cured, regular check-ins with your healthcare team are still needed, and you may have to take medication to manage side effects.

## Important Safety Information (cont'd)

### What are the possible or reasonably likely side effects of BREYANZI? (cont'd)

BREYANZI may increase your risk of getting cancers including certain types of blood cancers. Your healthcare provider should monitor you for this.

Having BREYANZI in your blood may cause a false-positive HIV test result by some commercial tests.

These are not all the possible side effects of BREYANZI. Call your doctor for medical advice about side effects. For more information, go to [BREYANZI.com](https://www.breyanzi.com) or call 1-888-805-4555. You may report side effects to the FDA. Visit [www.fda.gov/medwatch](https://www.fda.gov/medwatch) or call 1-800-FDA-1088.

Please see Important Safety Information throughout and full Prescribing Information, including **Boxed WARNINGS** and Medication Guide.



© 2024 Juno Therapeutics, Inc., a Bristol Myers Squibb company. All Rights Reserved.  
BREYANZI and the related logo are trademarks of Juno Therapeutics, Inc., a Bristol Myers Squibb company. CELL THERAPY 360 and the related logo are trademarks of Celgene Corporation, a Bristol Myers Squibb company. 05/24 2009-US-2300325

